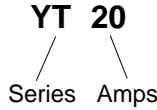


# YT-Series

Wye Three Phase, T-Section, 2-Stage

12704 W. Arden Place  
Butler, WI 53007 USA  
**Phone:** 262-790-0092  
**Fax:** 262-790-0095  
**Website:** www.emissioncontrol.com  
**E-mail:** info@emissioncontrol.com

### Part Number System

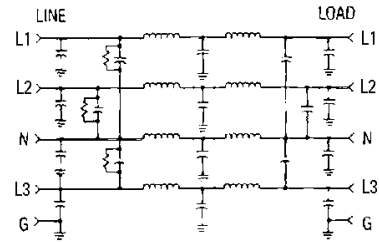


### Agency Approvals:



Part Number	Current Rating Amps	Schematic
-------------	---------------------	-----------

YT20	20
YT30	30
YT40	40
YT60	60



### Electrical Specs

Rated Voltage: 433VAC 50/60 Hz.  
Rated Current: @ 40° C

Hipot Rating:  
Line to Ground: 1500 VAC, 2 sec.  
Line to Line: 1450 VDC, 2 sec.

Climatic Category: HPF (25/085/21)

Maximum leakage current:  
each line to ground  
@ 250 VAC 60 Hz 3.4ma

\* Low leakage medical versions  
Available to meet UL544

Minimum insertion loss — dB (50 ohm circuit)

Current Rating	Frequency - MHZ	Mode						
		.05	.15	.5	1	5	10	30
20	Common	47	65	65	65	65	65	65
	Differential	27	53	65	65	65	65	65
30	Common	29	61	65	65	65	65	65
	Differential	17	48	65	65	65	65	65
40	Common	15	49	65	65	65	65	65
	Differential	6	43	65	65	65	65	64
60	Common	1	26	62	65	65	65	60
	Differential	11	31	61	65	65	65	49

### Mechanical Specs

Construction: Metal case with stud terminals. Internal components and terminations sealed with self-extinguishing wax.

Connections: #1/4—Studs

Dimensions: inches (mm)

