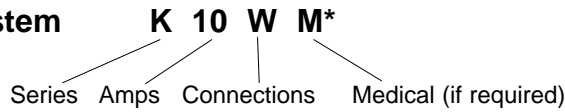


K-Series

General Purpose, 1-stage, medium attenuation

12704 W. Arden Place
Butler, WI 53007 USA
Phone: 262-790-0092
Fax: 262-790-0095
Website: www.emissioncontrol.com
E-mail: info@emissioncontrol.com

Part Number System



Agency Approvals:



Part Number	Current Rating Amps	Schematic
K1Q	1	
K1W	1	
K5Q	5	
K5W	5	
K10Q	10	
K10W	10	
K10S	10	

Electrical Specs

Rated Voltage: 250VAC 50/60 Hz.
Rated Current: @ 40° C

Hipot Rating:
Line to Ground: 1800 VAC, 2 sec.
Line to Line: 1700 VDC, 2 sec.

Climatic Category: HPF (25/085/21)

Maximum leakage current:
each line to ground
@ 250 VAC 50 Hz .
K1 K5 K10
.43 .29 .20 / ma

Minimum insertion loss — dB (50 ohm circuit)

Current Rating	Mode	Frequency - MHZ						
		.05	.15	.5	1	5	10	30
1	Common	43	57	52	50	48	49	40
	Differential	--	36	63	65	65	64	64
5	Common	11	21	30	35	46	48	44
	Differential	7	15	27	50	65	64	65
10	Common	8	17	24	27	39	44	50
	Differential	7	16	8	43	65	65	60

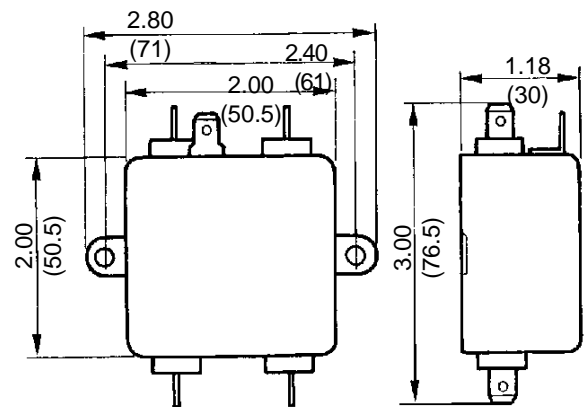
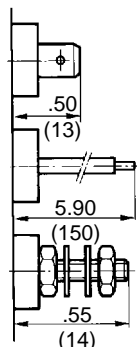
* Low leakage medical versions
Available to meet UL544

Mechanical Specs

Construction: Metal case and cover. Internal components and terminations sealed with self-extinguishing resin.

Connections:

- S = Studs
M4
- Q = Quick-Connects
.25"(6.3)x.03"(0.8)
- W= Wire Leads
AWG 14



(2) Mounting Holes .20 DIA (5.1)