

## B-Series

General Purpose, 1-stage, minimum attenuation

12704 W. Arden Place  
Butler, WI 53007 USA

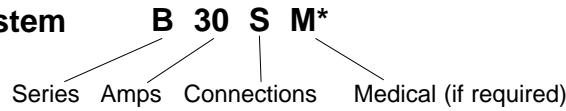
Phone: 262-790-0092

Fax: 262-790-0095

Website: [www.emissioncontrol.com](http://www.emissioncontrol.com)

E-mail: [info@emissioncontrol.com](mailto:info@emissioncontrol.com)

### Part Number System



### Agency Approvals:



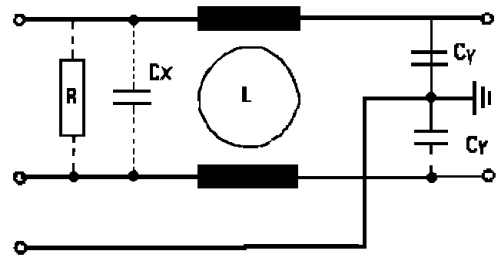
Part Number	Current Rating Amps	Schematic
-------------	---------------------	-----------

**B30S**

**30**

**LINE**

**LOAD**



### Electrical Specs

Rated Voltage: 250VAC 50/60 Hz.  
Rated Current: @ 40° C

Hipot Rating:  
Line to Ground: 1800 VAC, 2 sec.  
Line to Line: 1700 VDC, 2 sec.  
Climatic Category: HPF (25/085/21)

Maximum leakage current:  
each line to ground  
@ 250 VAC 50 Hz .23ma

Minimum insertion loss — dB (50 ohm circuit)

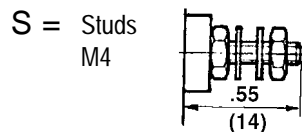
Current Rating	Mode	Frequency - MHZ						
		.05	.15	.5	1	5	10	30
30	Common	11	21	30	33	35	38	37
	Differential	--	3	11	17	47	43	49

\* Low leakage medical versions  
Available to meet UL544

### Mechanical Specs

Construction: Metal case and cover. Internal components and terminations sealed with self-extinguishing resin.

Connections:



Dimensions: inches  
(mm)

