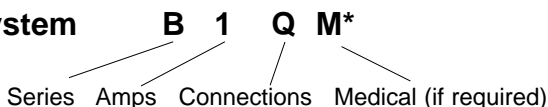


B-Series

General Purpose, 1-stage, minimum attenuation

12704 W. Arden Place
Butler, WI 53007 USA
Phone: 262-790-0092
Fax: 262-790-0095
Website: www.emissioncontrol.com
E-mail: info@emissioncontrol.com

Part Number System



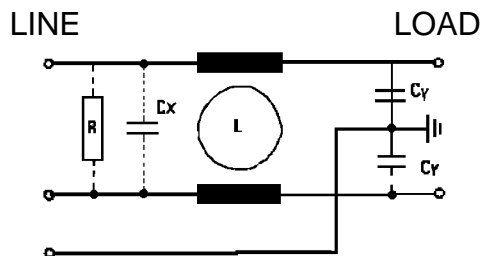
Agency Approvals:



Part Number	Current Rating Amps	Schematic
-------------	---------------------	-----------

B1Q
B3Q
B5Q

1
3
5



Electrical Specs

Rated Voltage: 250VAC 50/60 Hz.
Rated Current: @ 40° C

Hipot Rating:
Line to Ground: 1800 VAC, 2 sec.
Line to Line: 1700 VDC, 2 sec.

Climatic Category: HPF (25/085/21)

Maximum leakage current:
each line to ground
@ 250 VAC 50 Hz .23ma

Minimum insertion loss — dB (50 ohm circuit)

Current Rating	Mode	Frequency - MHZ						
		.05	.15	.5	1	5	10	30
1	Common	31	41	47	49	46	46	49
	Differential	--	--	8	20	57	62	55
3	Common	17	27	34	37	44	45	45
	Differential	--	--	5	10	39	62	56
5	Common	15	24	29	32	43	46	53
	Differential	--	--	5	10	31	55	58

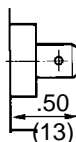
* Low leakage medical versions
Available to meet UL544

Mechanical Specs

Construction: Metal case and cover. Internal components and terminations sealed with self-extinguishing resin.

Connections:

Q = Quick-Connect
.25(6.3)x.03(0.8)



Dimensions: inches
(mm)

